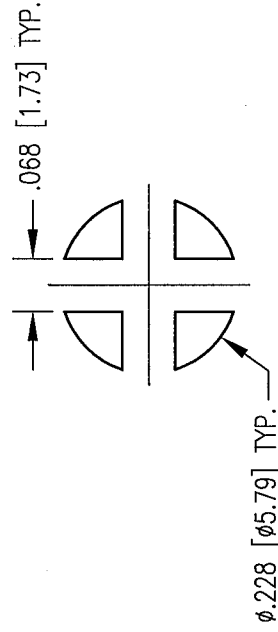
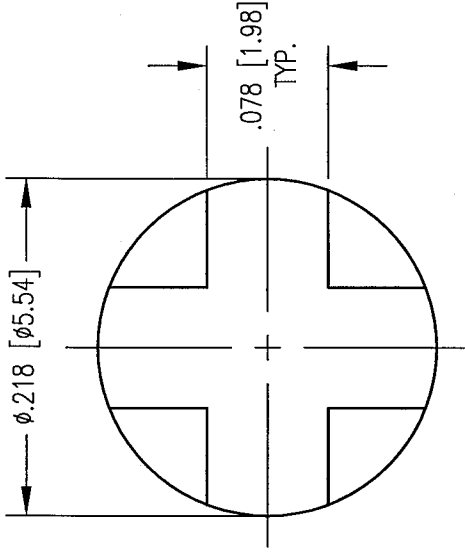
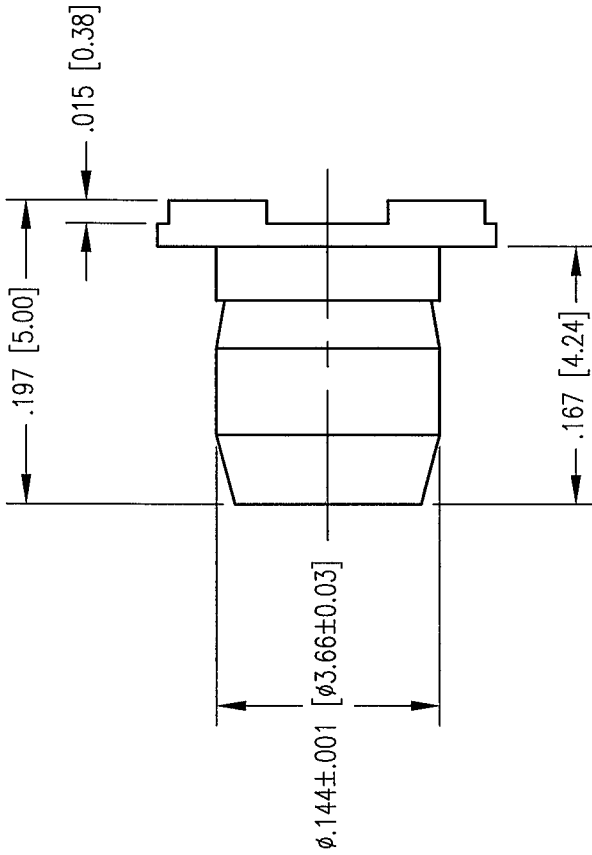


DWG. NO.

01347

REV	DESCRIPTION	DATE	BY	APPD
1	NPR 3075	11/08/02	KJT	[Signature]



RECOMMENDED PAD LAYOUT

NOTES:

1. MATERIALS
BODY: BRASS PER ASTM B16
2. FINISH:
BODY: .000030 MIN. GOLD PER MIL-G-45204 OVER
.000050 MIN. NICKEL PER QQ-N-290

PER ASME Y14.5M-1984 UNLESS OTHERWISE SPECIFIED: DIMENSIONS ARE IN INCHES (MM)		NORTHROP GRUMMAN	
TOLERANCES: DECIMALS .XX ± .01 [0.254] XXX ± .005 [0.127] ANGLES ± Z	SCALE: 4:1	Winchester Electronics 400 Park Road Watertown, CT 06795	TITLE
CUSTOMER DRAWING		20 AMP SURFACE MOUNT POWER PLUG	
DRAWN KJT	CHECKED [Signature]	DATE 11/08/02	DATE 11/08/02
APPROVED [Signature]	DATE 11/08/02	DATE 11/08/02	DATE 11/08/02
A		01347	1 1 1